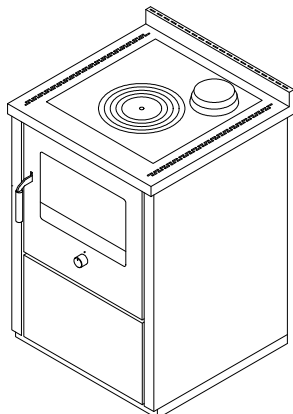


**E60****WOOD-COOKERS "ECO"**

mm 600x600xh860

CE EN -12815 certification



Colours:

White, Blue, Green, Grey, Black, Red, Ivory, Rust, Stainless steel

**STANDARD EQUIPMENT**

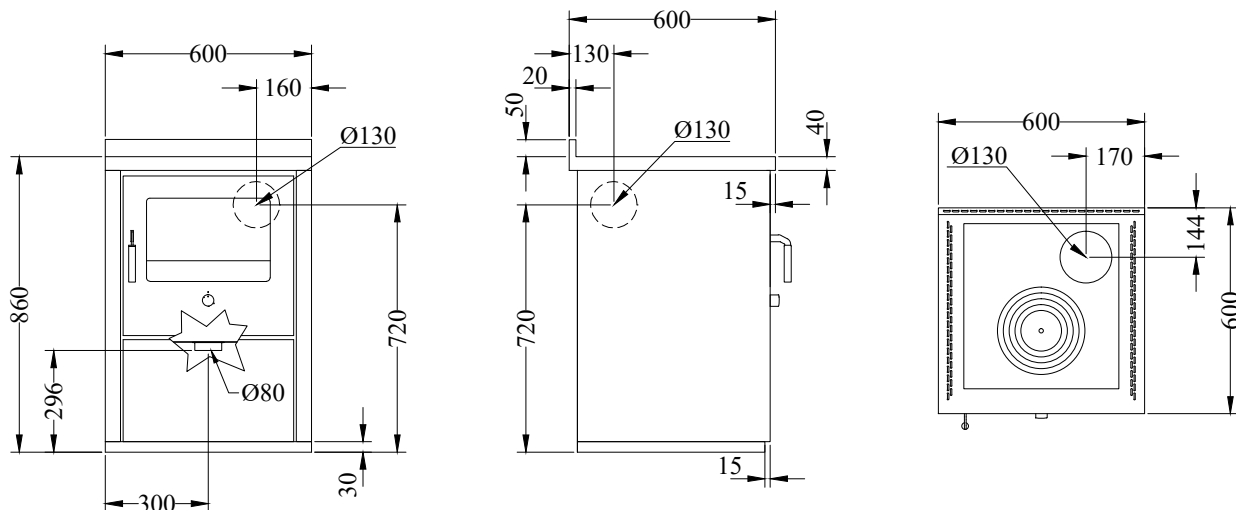
- right or left top flue outlet  $\varnothing$  130 mm
- cast-iron hotplate mm 480x450 with cooking ring set
- black doors
- s.steel handles D3
- s.steel frame mm 40 (total height 860 mm)
- s.steel base h. 30 mm

**BY REQUEST**

- s.steel doors
- s.steel handles D1
- rear flue outlet, right or left  $\varnothing$  130 mm
- glass-ceramic hotplate (rear flue exit)

**OPTIONALS:**

- frontal handrail, s.steel or brass, 2 or 3 sides
- heavy-duty radiant hotplate
- stainless steel hotplate cover

**DATA SHEET**

Nominal heat output: 5 kw	Efficiency: 83 %
Max heat output: 6.5 kw	Mean content of CO to 13% O <sub>2</sub> : 0.06 %
Mean flue gas temperature: 245 C°	Flue gas mass flow: 5.8 g/s
Hearth dimensions (LxPxH): 30x29x31 cm	Average DUST content to 13% O <sub>2</sub> : 12.6 mg/Nm <sup>3</sup>
Fill opening (LxH): 36x22 cm	External flue air: $\varnothing$ 80 mm
Flue depression: 0.12 mbar	Net weight/packaging included: 120/130 kg